



A Brand AE-MSS-H

Advanced Performance Carbide End Mills with DUOREY Coating

ABOUT OSG

DRILLING

THREADING

MILLING

HOLDERS

INDEX

List 8441

A BRAND AE-MSS-H, Reduced Neck



NEW

SPEED FEED
1347

CARBIDE

DUOREY

43°



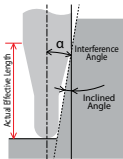
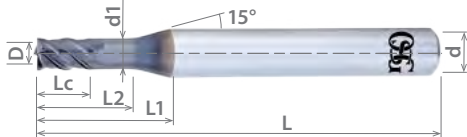
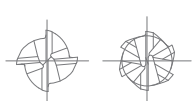
SHANK
h6

STUB

PACKED
1 PIECE

Cutting Diameter Tolerance

1/16" ≤ D ≤ 1/2" +0 / -0.0008"



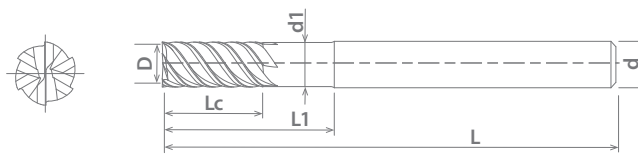
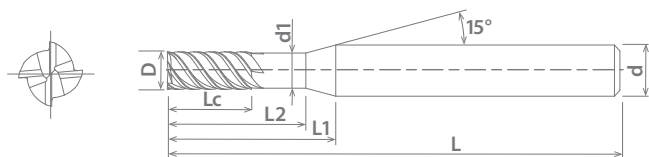
EDP Number	Dia.	Length of Cut	Neck Length	Non-Taper Neck Length	Neck Dia.	Interference Angle	Effective Neck Length by Incline Angle					Overall Length	Shank Dia.	No. of Flutes	Type	Center Cutting
							0.5° (Inch)	1.0° (Inch)	1.5° (Inch)	2.0° (Inch)	3.0° (Inch)					
84410023	1/16	0.094	0.304	0.188	0.061	9.9	0.194	0.201	0.208	0.216	0.234	2.500	0.250	4	1	-
84410123	5/64	0.117	0.380	0.234	0.076	8.8	0.242	0.250	0.259	0.269	0.291	2.500	0.250	4	1	-
84410223	3/32	0.141	0.456	0.281	0.092	7.8	0.290	0.301	0.311	0.323	0.349	2.500	0.250	4	1	-
84410323	7/64	0.164	0.532	0.328	0.105	6.8	0.339	0.351	0.364	0.377	0.408	2.500	0.250	4	1	-
84410423	1/8	0.188	0.608	0.375	0.119	5.9	0.388	0.401	0.416	0.431	0.466	2.500	0.250	4	1	-
84410523	5/32	0.234	0.760	0.469	0.150	4.2	0.485	0.502	0.520	0.539	0.583	2.500	0.250	4	1	-
84410623	3/16	0.281	0.912	0.563	0.182	2.6	0.582	0.602	0.624	0.647	-	2.500	0.250	4	1	-
84410723	7/32	0.328	1.064	0.656	0.213	1.3	0.678	0.705	-	-	-	2.500	0.250	4	1	-
84410823	1/4	0.375	-	0.750	0.244	-	-	-	-	-	-	2.500	0.250	6	2	●
84410923	9/32	0.422	1.369	0.844	0.275	1.0	0.872	-	-	-	-	3.000	0.313	6	1	-
84411023	5/16	0.469	-	0.938	0.307	-	-	-	-	-	-	3.000	0.313	6	2	●
84411123	3/8	0.563	-	1.125	0.369	-	-	-	-	-	-	3.500	0.375	6	2	●
84411223	7/16	0.656	-	1.313	0.432	-	-	-	-	-	-	3.500	0.438	6	2	●
84411323	1/2	0.750	-	1.500	0.492	-	-	-	-	-	-	4.000	0.500	6	2	●

● Stocked ○ Available Upon Request; MOQ May Apply ▲ Globally Stocked



Type 1

Type 2



P					M			K	N		S		H						
Steel					Stainless Steel			Cast Iron	Non-Ferrous		HRSA		Hardened Steel						
Carbon Steel			Alloy Steel	Die Steel	300	400	17-4 PH		Aluminum		Nickel Alloy	Titanium	Hardened Steel						
Low	Medium	High							6061	7075			Casting	Inconel	6Al4V (30 HRC)	~35 HRC	35-45 HRC	45-50 HRC	50-70 HRC
1010	1035	1045	1065	4140	4340														
1018	1045	1065																	

○ Good ⊙ Best

